

---

# Installing Drivers with Windows 7 64 bit

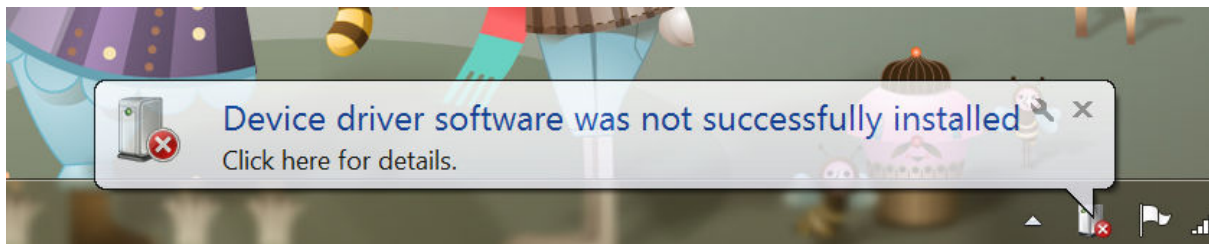
---

Windows 7 can be reluctant to load drivers for new hardware. This is a guide to installing Atik hardware on this operating system. Our drivers come in two types: USB1 for the electronic filterwheel and Atik 16IC, and USB2 for the Atik 314,383, 4000 and 11000 cameras. The process is much the same whichever hardware is being installed. First you need to locate the drivers. This may be on the CD or downloaded from

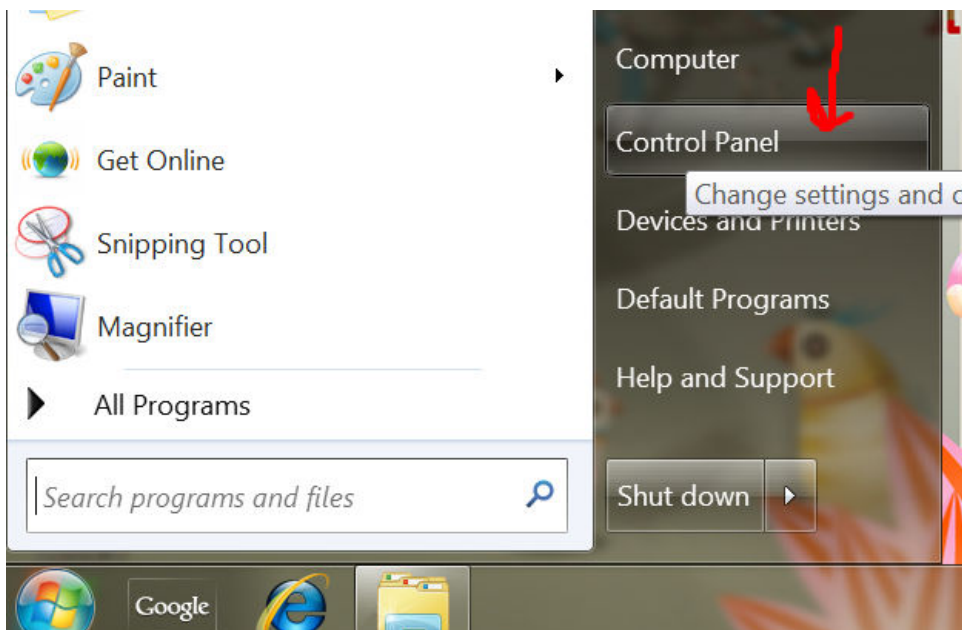
<http://www.atik-cameras.com/html/downloads.html>

In this example I have made a directory called drivers with subdirectories of USB1 and USB2 on the desktop. Then downloaded and unzipped the files from the website into the corresponding directory (ie usb1.zip to desktop/drivers/usb1).

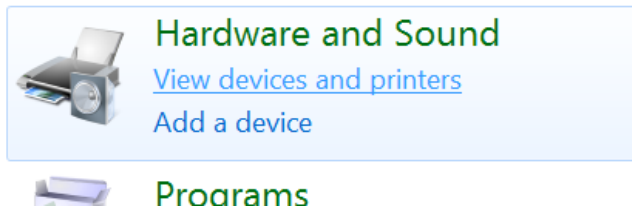
When new hardware is plugged into Win7 it will try to find drivers. If it does not find these you may see the following message.



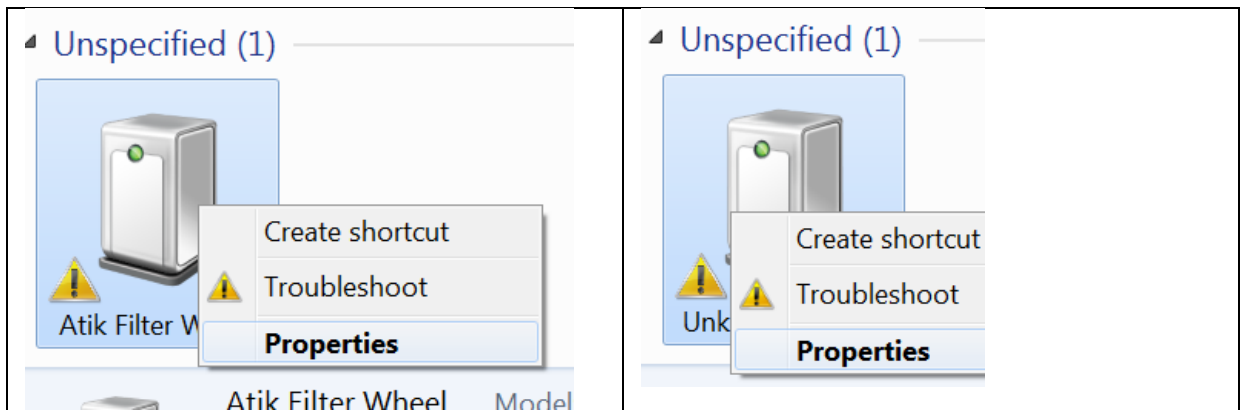
To correct this make sure you are logged in to an administrator account and go into start -> control panel



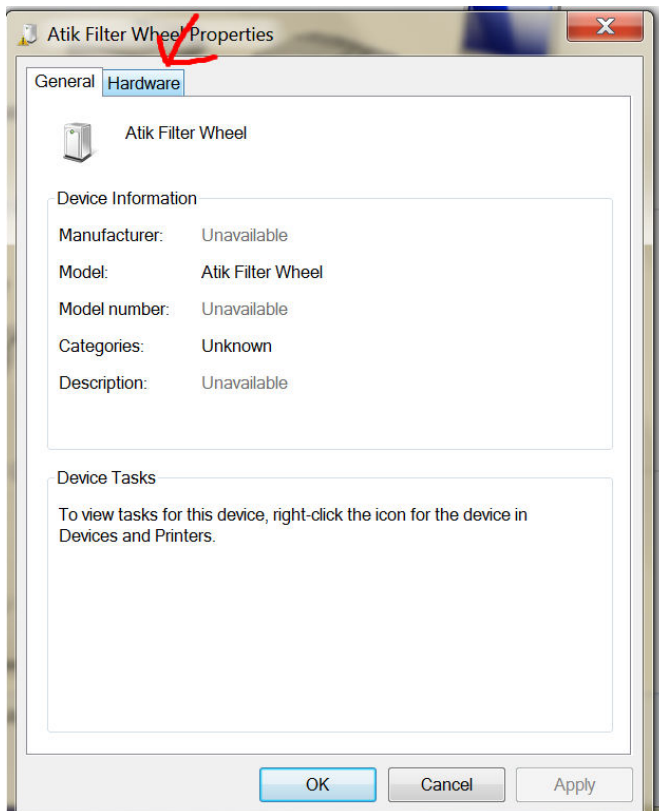
Then under hardware and sound select “view devices and printers



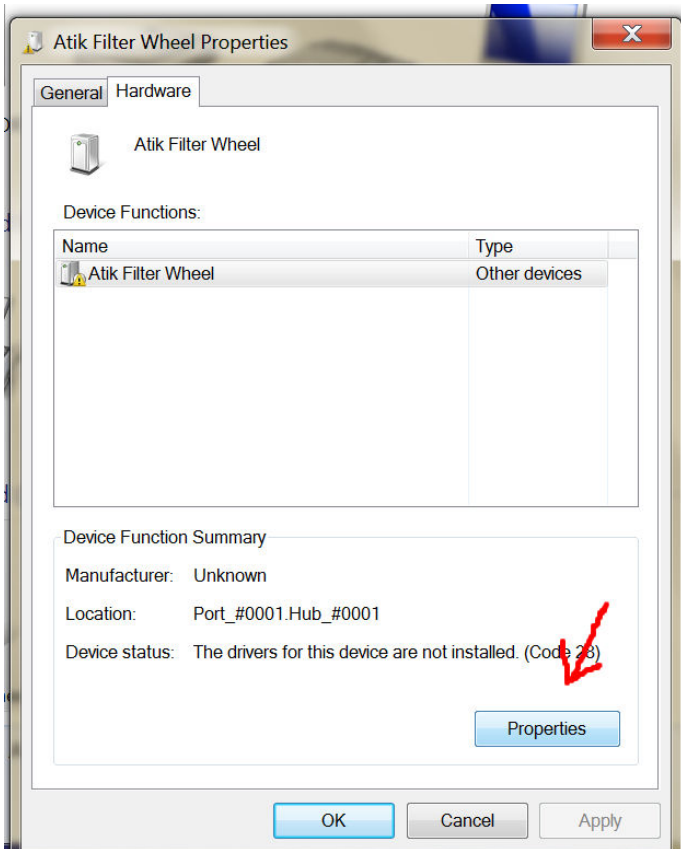
Under the heading “Unspecified” you may see a device with a orange triangle next to it. If it’s a USB1 device it will have the devices name or for the USB2 devices it will say Unknown device



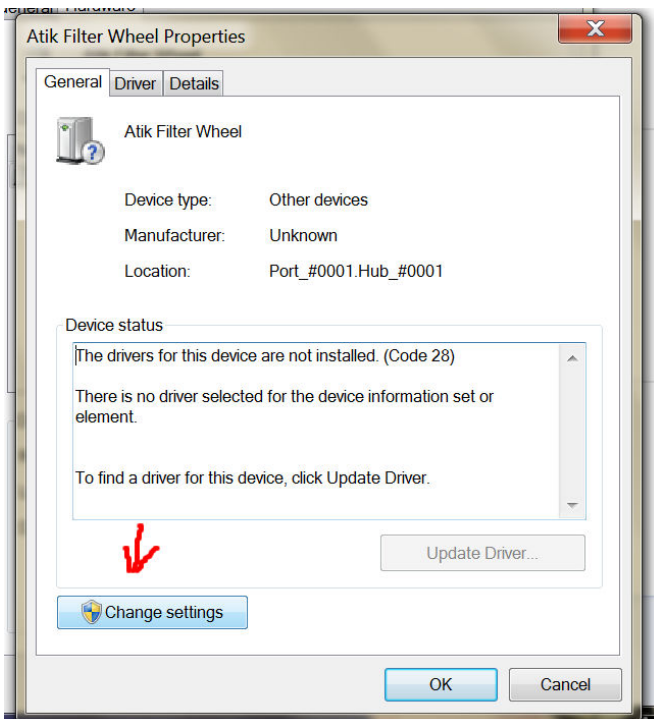
In either case right click the icon and select properties. This will bring up the properties dialogue.



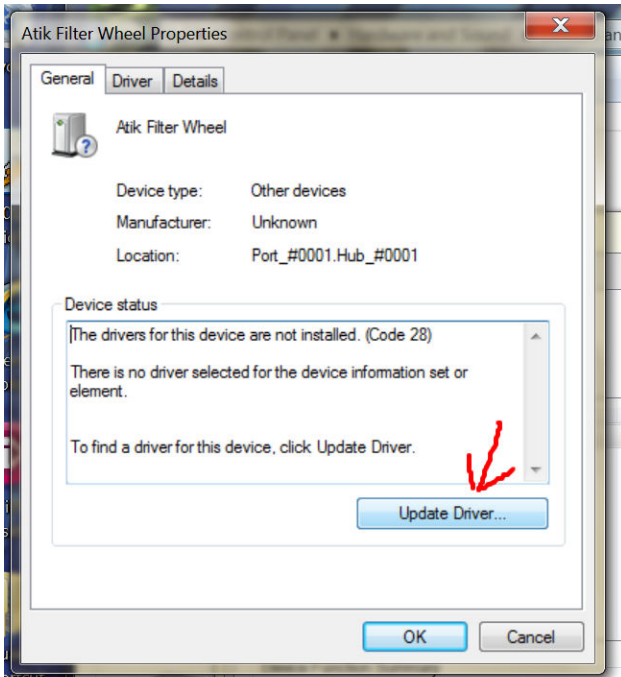
Click on the hardware tab.



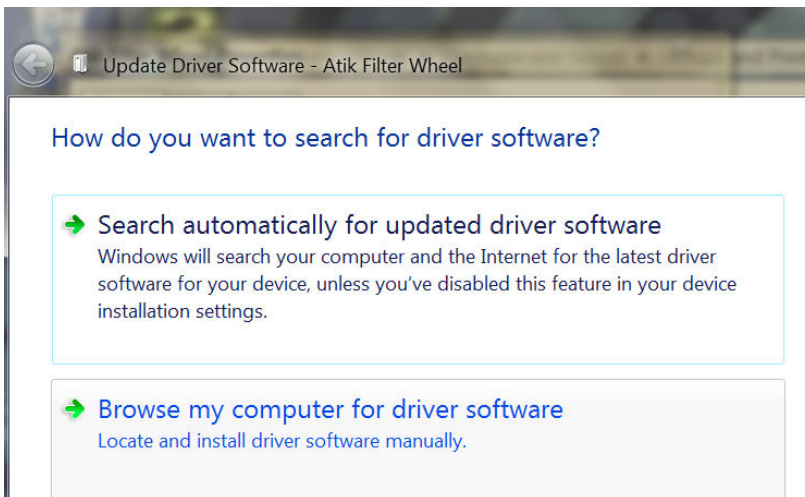
Next click on the properties button



What we want to do is update driver but this option may be grayed out. If so click on change settings. That will bring up another dialogue where we can click on update driver

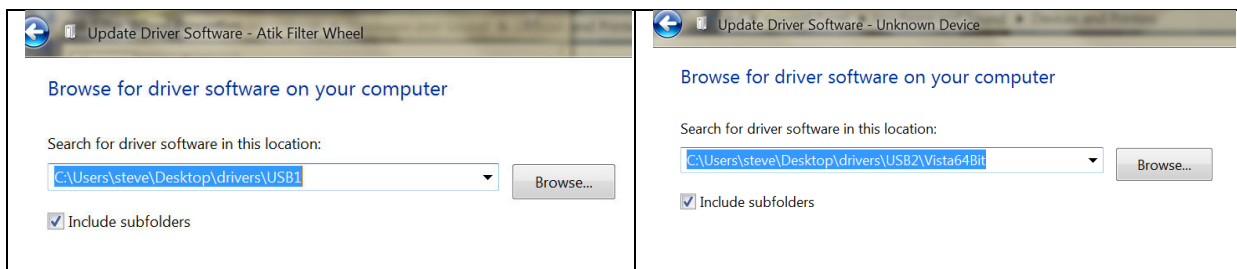


Click on update driver to bring up the next window.

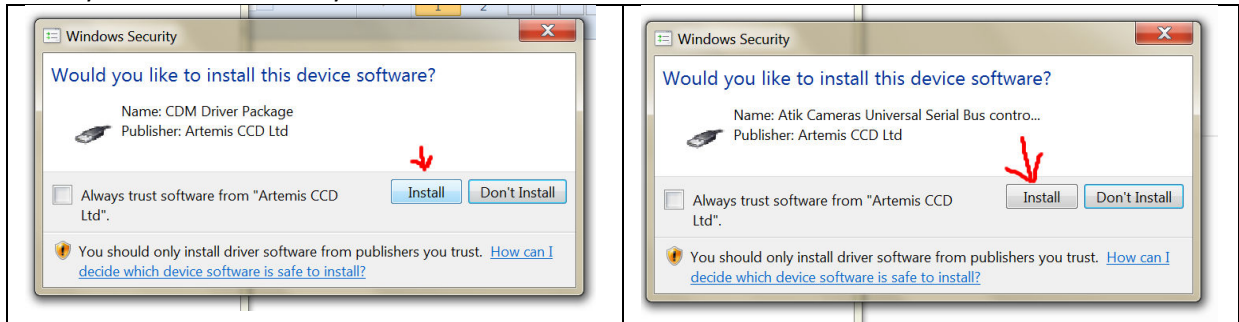


Click on Browse my computer for driver software.

Now you need to direct Windows to the drivers, either on the CD or in this case the downloaded drivers on the desktop. Remember you need the USB1 drivers for the USB1 cameras and filter wheel and USB2 for the USB2 cameras. In the case of the USB2 drivers select the Vista64 directory.



Next you will see a security window. Click install



Finally windows should report that it has successfully updated your driver software.

