

The QS14 cooled CCD camera from Atik Cameras features Sony's 1.4MP low noise progressive scan sensor. High resolution with low read out noise and 4fps (preview) is a combination designed to provide images which are ideally suited to many scientific applications in low light conditions. The form factor of the QS14 provides a compact overall package where space in the imaging axis is at a premium. All Atik cameras are supplied with a comprehensive software development kit and are also fully compatible with popular 3rd party image acquisition programs.

This standard product from Atik can be adapted as a semi-custom camera for specific OEM applications. Contact us for more information.

### Software Development Kit (SDK)

- C++ Library covering all camera functions
- Visual Basic wrapper
- .net Wrapper
- Linux Driver

### Available Accessories

- Universal Power Supply (90-240VAC)/DC 12V
- C-Mount lens adaptor

### Service Item

- Desiccant Cartridge

### Ordering Codes

Atik-QS14 - Y

Y: M = Monochrome. C = Colour

Atik QS14	
<b>Sensor Mono</b>	ICX285AL
<b>Sensor Colour</b>	ICX285AQ
<b>Sensor Diagonal</b>	11.0 mm
<b>Sensor Format</b>	2/3
<b>Resolution H</b>	1392 pixels
<b>Resolution V</b>	1040 pixels
<b>Pixel L &amp; W</b>	6.45µm
<b>Noise</b>	9e- (Typical)
<b>ADC</b>	16 bit
<b>Cooling</b>	T(amb)-20°C (Regulated) *
<b>Dark Current</b>	0.01e-/p /s at -10°C
<b>Back Focus</b>	12 mm ±0.5
<b>Weight</b>	Approximately 400g
<b>Interface</b>	USB 2.0
<b>Power</b>	12VDC 0.8A (Centre positive)

\* The 12V supply for the thermoelectric cooler should be turned off when the camera is not in use.

For enquiries, please contact:

**Atik Cameras**

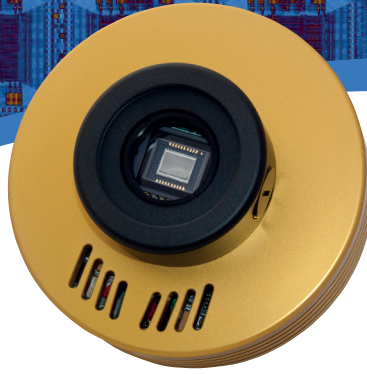
Unit 8 Lodge Farm Barns, New Road, Bawburgh  
Norwich, NR9 3LZ, United Kingdom

**T: +44 (0)1603 740397**

**F: +44 (0)1603 340600**

**E: sales@atik-cameras.com**

**W: www.atik-cameras.com**



**Mechanical Drawing**

