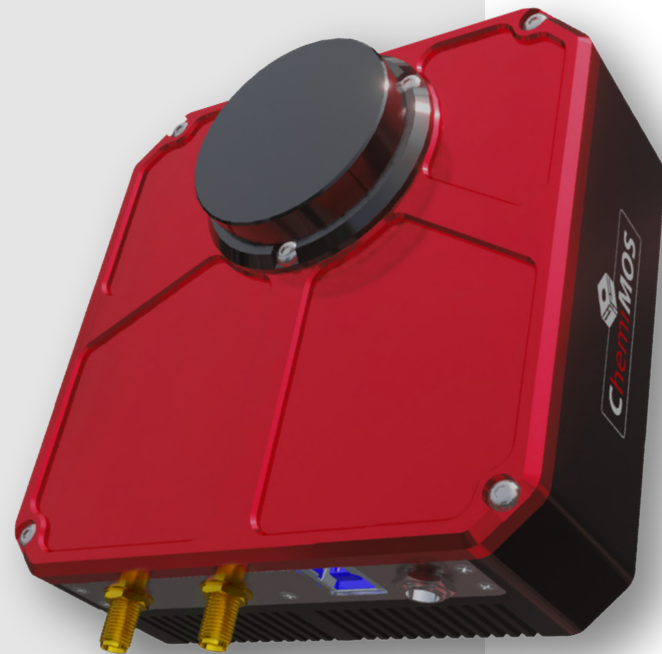


# ChemiMOS S E R I E S

The ChemiMOS series is designed specifically for long-exposure imaging in laboratory or research environments and includes models with and without a filter wheel.

Cooling is optimized to minimize the dark current, without the need for extreme temperatures, which could complicate the end user design. Calibration routines such as dark frame subtraction and off-camera image processing are included, meaning flexibility and transparency when operating the camera. It includes customizable firmware to align acquisition and triggering logic with host systems.

- Ease of integration and customization (low mechanical footprint)
- Exceptionally low dark current
- Zero amp glow and low read noise
- High-performance cooling
- No downtime for recalibration
- Ultra-clean long exposures
- Available with 2 different CMOS sensors / resolutions



# ChemiMOS Technical Specifications

	<b>ChemiMOS 9</b>	<b>ChemiMOS 9FW</b>	<b>ChemiMOS 26</b>
Integrated Filter Wheel	No	Yes	No
Image sensor	Sony IMX533 CMOS (Mono/Color)	Sony IMX533 CMOS (Mono/Color)	Sony IMX571 CMOS (Mono/Color)
Resolution	3011 × 3011	3011 × 3011	6252 × 4176
Sensor diagonal (effective pixels)	15.968 mm (11.3 mm x 11.3 mm)	15.968 mm (11.3 mm x 11.3 mm)	28.3 mm (23.5 mm x 15.7mm)
Pixel size	3.76 μm	3.76 μm	3.76 μm
Full well capacity	>50 000 e-	>50 000 e-	>50 000 e-
Read noise	1.6 e- (High Gain Mode) 3.6 e- (Low Gain Mode)	1.6 e- (High Gain Mode) 3.6 e- (Low Gain Mode)	1.6 e- (High Gain Mode) 3.6 e- (Low Gain Mode)
Dark current	0.0005 e-/p/s at -20°C	0.0005 e-/p/s at -20°C	0.0005 e-/p/s at -20°C
Cooling capacity	35°C below room temperature	35°C below room temperature	35°C below room temperature
Mount type	M42 × 0.75 (T-mount) or 1"- 32 UN 2A (C-Mount)	M42 × 0.75 (T-mount)	M54 × 0.75
ADC	14 bit (with 16 bit image mode)	14 bit (with 16 bit image mode)	16 bit
Back focus distance	17.5 mm ±0.5	29.5 mm ±0.5	17.5 mm ±0.5
Reading mode	Electronic Rolling Shutter	Electronic Rolling Shutter	Electronic Rolling Shutter
Exposure range	0.001s to 24 hours	0.001s to 24 hours	0.001s to 24 hours
Frame rate	12 FPS	12 FPS	4 FPS
Power supply	12VDC 5A	12VDC 5A	12VDC 5A